

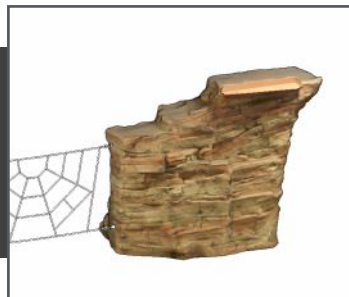


A realistic rock climber with varying degrees of climbing difficulties. Constructed of durable Glass Fiber Reinforced Concrete (GFRC). The unique design allows for 360 degrees of climbing, integrated handholds, realistic texture, fossil reliefs and a one of a kind ADA access for users of all abilities. Choose a variety of designs from our Rope Links (8000001, 8000200 thru 8000205) to attach to the Strato Rock Climber w/rope tabs and Slide Attachments (200062 thru 200066).



**Strato Rock Climber  
1000001**

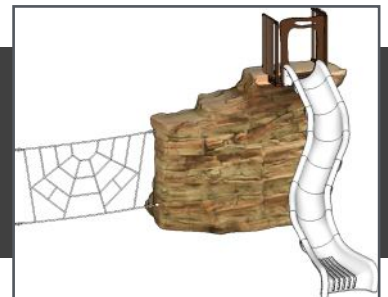
L: 10'-3" x W: 7'-4" x H: 8'-0"  
5,200 LBS



**Strato Rock Climber  
w/Rope Tabs  
1000010**



**Strato Rock Climber  
w/Slide Attachment  
1000011**



**Strato Rock Climber w/Slide  
Attachment and Rope Tabs  
1000012**

~ Dimensions and weights are approximate ~  
~ Heights shown from top of surfacing ~  
**User Group Age: 5-12**

All images and concepts are Copyright © 2025,  
Cre8Play, LLC-All rights reserved. Cre8Play may  
change or modify this information as necessary  
and without notice.

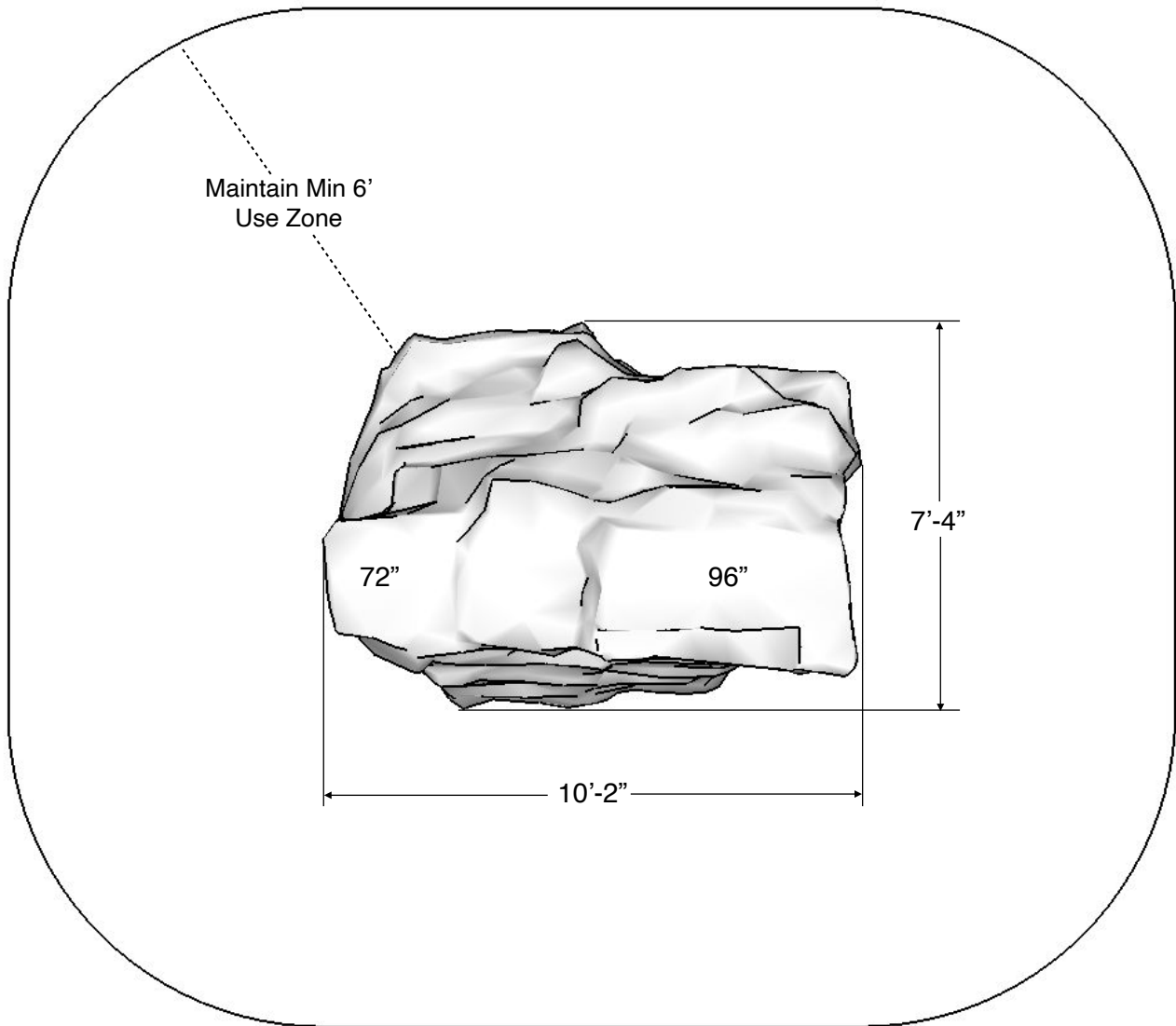
Revised 2/4/2025

2401 Edgewood Ave S • Suite 200  
St. Louis Park, MN 55426  
612.670.8195  
info@cre8play.com  
cre8play.com

**Installation Instructions**

**Product: 1000001, 1000010, 1000011, & 1000012**

Use Zone

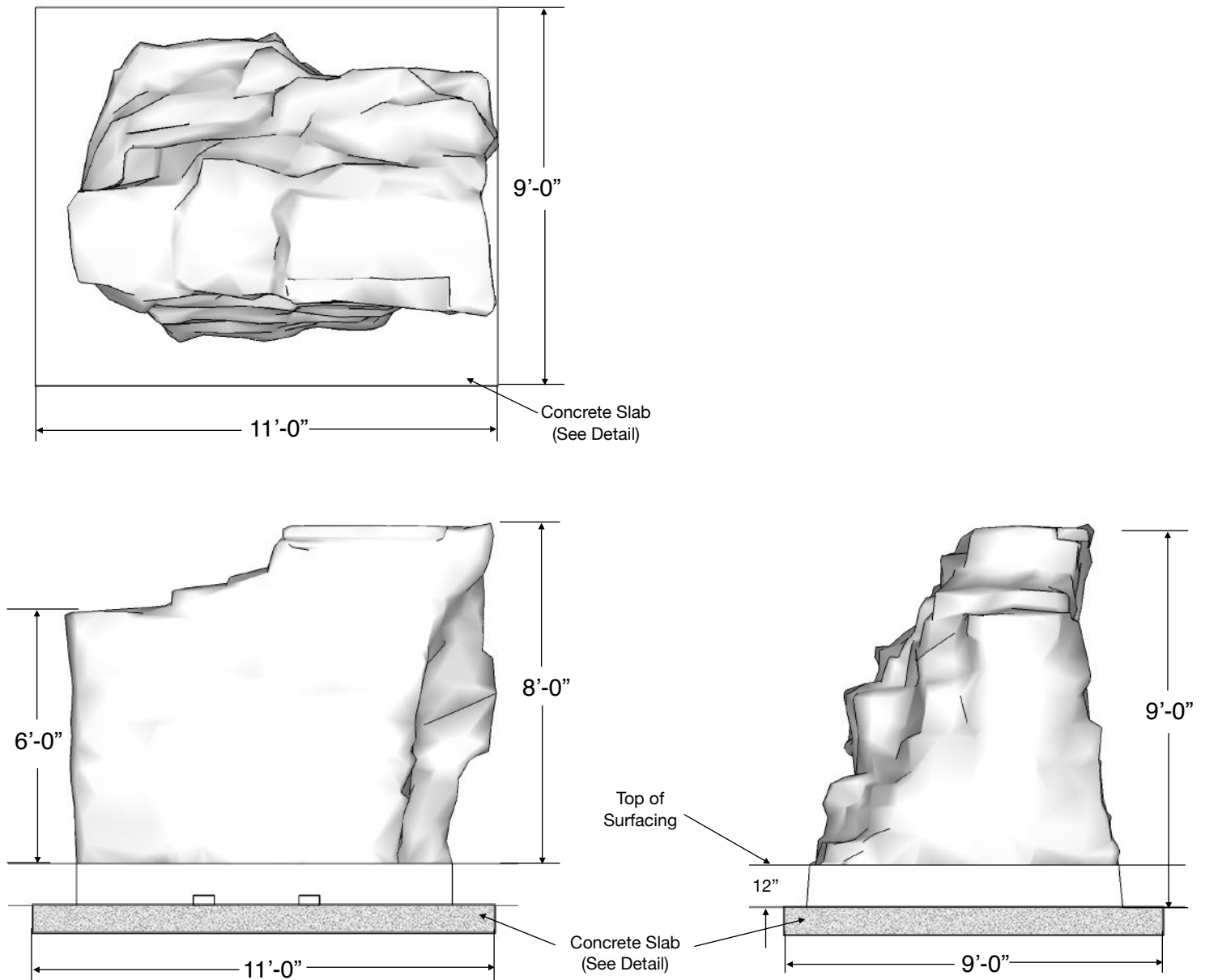


~ All dimensions are approximate ~

**User Group Age: 5-12**

Revised 2/4/2025

**Product: 1000001, 1000010, 1000011, & 1000012**



If you determine that less than 12" of surfacing is required, make sure the top of the concrete slab is 12" below the top of the protective surfacing.

## Installation Instructions

### 1000001, 1000010, 1000011 & 1000012

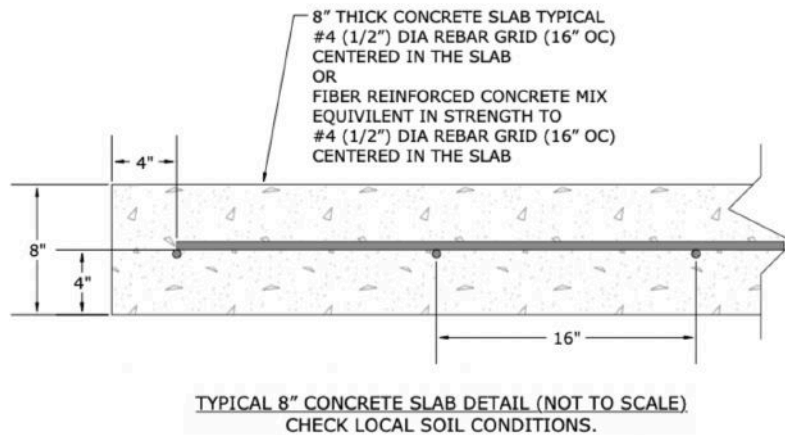
**NOTE:** Read installation instructions thoroughly before starting installation process.

**Step 1:** Lay out the area and prepare the site for install. Concrete must be installed over a solid, level base. Check local soil condition and local codes. See product installation instructions for minimum use zone requirements to ensure proper spacing and adequate surfacing area.

**Step 2:** Pour a concrete base for the Strato Rock Climber. Refer to the typical slab section on this page. The concrete should be flush with the sub-grade surface. Allow time for the concrete to completely cure before continuing.

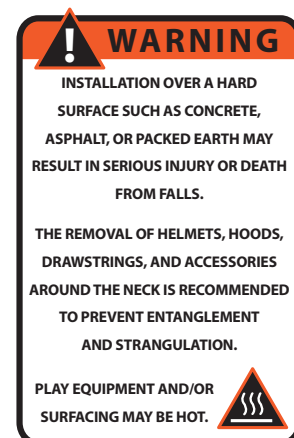
**Step 3:** Using an appropriate lull-type forklift or boom, place Strato Rock Climber into final installation location. See the hardware recommendation page for information on anchoring equipment down to your slab. Refer to the surfacing manufacturer for installation of an approved impact attenuating play surface around the Strato Rock Climber with a minimum of 6 feet in every direction.

**Note:** See steps 4-8 of these installation instructions for the Rope Link and Strato Slide Attachment when installing Strato Rock Climber product numbers 1000010, 1000011 or 1000012.



#### NOTES PRIOR TO CONSTRUCTION:

- Use appropriate equipment to lift and move the play equipment.
- Check local codes and requirements prior to digging or installing any equipment.



~ All dimensions are approximate ~

**User Group Age: 5-12**

Revised 2/4/2025



## Installation Instructions

### 1000011 or 1000012 (Slide Enclosure)

**Step 4:** Attach the Slide Deck Enclosure to the Slide Deck using hardware kit HK023 (4 places).

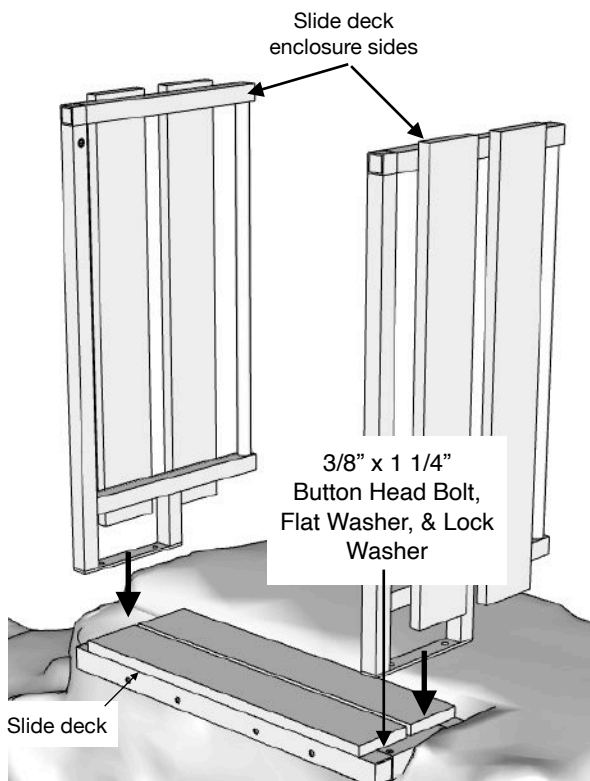
**Step 5:** Attach the VP1015 bracket to the slide enclosure using hardware kit HK132 (2 places).

**Step 6:** Attach the slide panel to the slide enclosure using hardware kit HK092 (2 places).

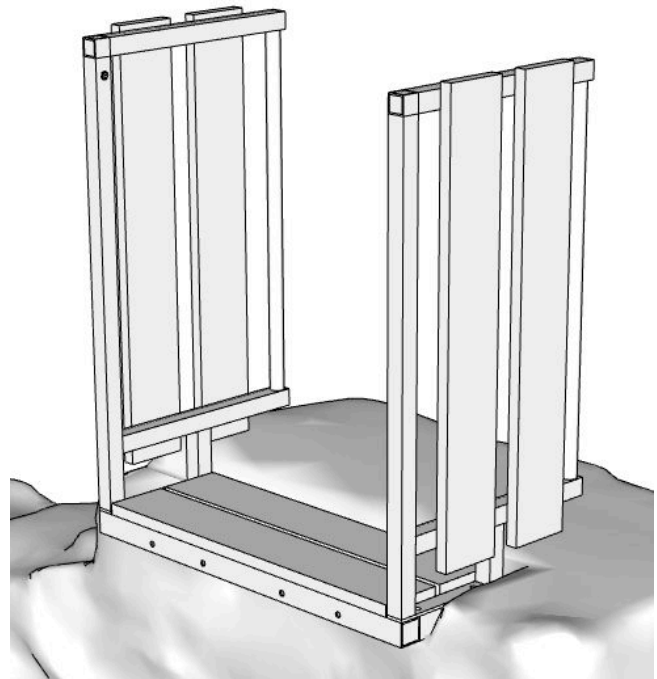
**Step 7:** Attach the slide panel to the back of the slide using hardware kit HK025 (2 places).

**Step 8:** Attach the slide to the front of the slide panel using hardware kit HK097 (2 places) & HK070 (4 places).

**Note:** See 200062-200066 installation instructions and slide manufacturers instructions for the slide assembly.



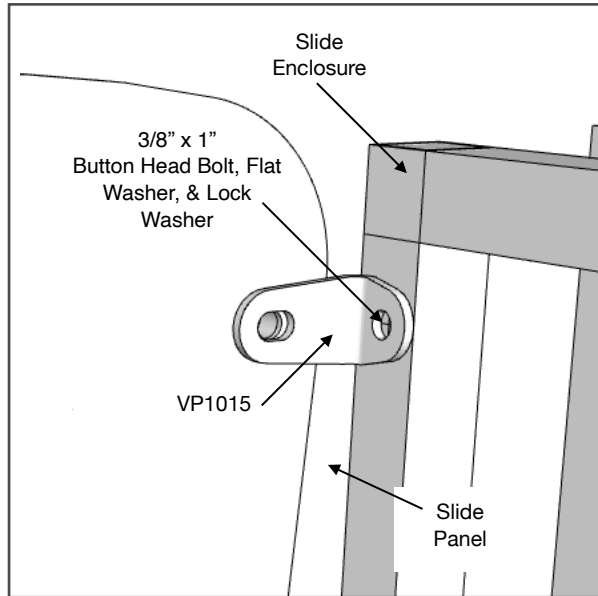
**Step 4:** Attach the slide deck enclosure sides to the slide deck using hardware #HK023 (4 places).



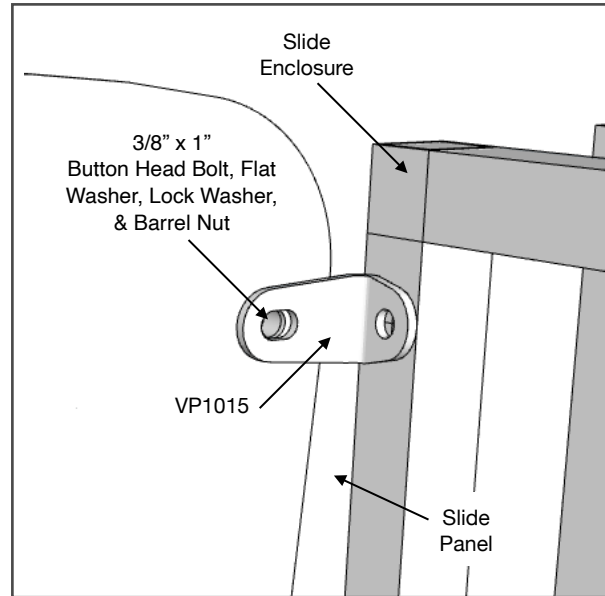
**Step 4:** The assembled slide deck and enclosure are shown above. See separate installation instructions for the Strato Slide Attachment.

## Installation Instructions

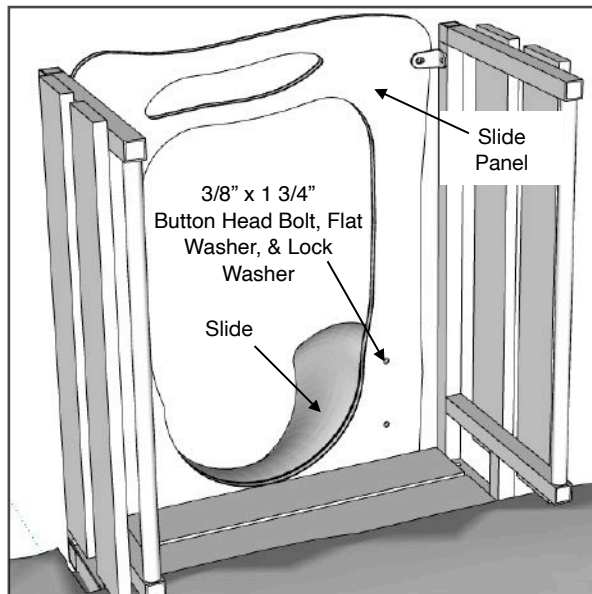
### 1000011 or 1000012



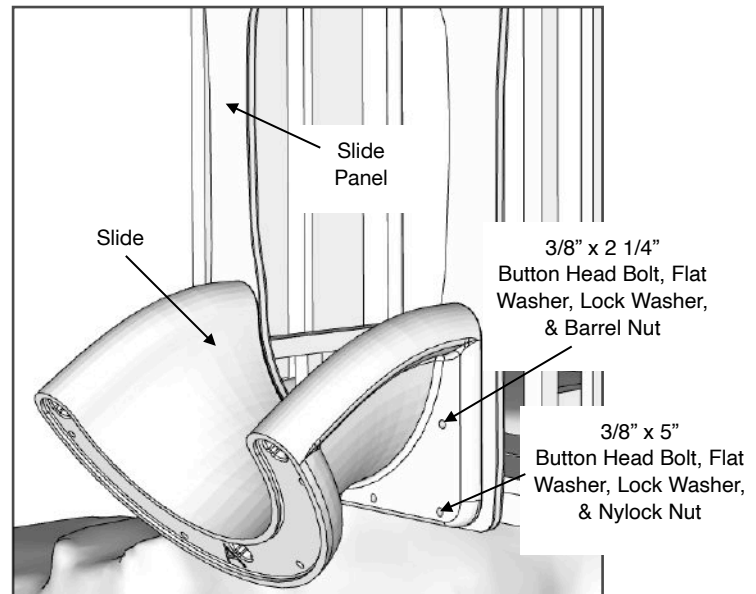
**Step 5:** Attach the VP1015 bracket to the slide enclosure using hardware kit HK132 (2 places).



**Step 6:** Attach the slide panel to the slide enclosure using hardware kit HK092 (2 places).



**Step 7:** Attach the slide panel to the back of the slide using hardware kit HK025 (2 places).



**Step 8:** Attach the slide to the front of the slide panel using hardware kit HK097 (2 places) & HK070 (4 places).

~ All dimensions are approximate ~

**User Group Age: 5-12**

Revised 2/4/2025

## Installation Instructions

### 1000001, 1000010, 1000011 & 1000012

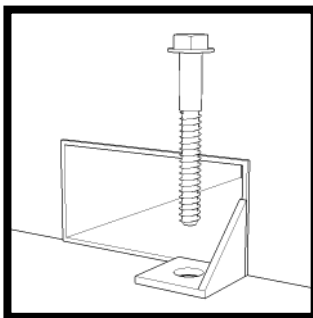
**Step 9:** Locate your anchor bolts, supplied by Cre8Play. Using the proper standard drill bit size noted in the installation table, drill the concrete to the appropriate hole depth (C).

**Step 10:** Insert the anchor bolt into the hole and tighten until the bolt is fully seated. Do NOT over tighten the anchor bolts.

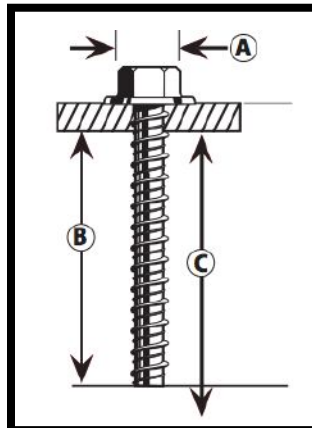
Installation Table

Anchor Bolt Size	ANSI Standard Drill Bit Diameter	Anchor Head (Socket Size) Diameter (A)	Minimum Embedment (B)	Hole Depth (C)
5/8" x 6"	1/2"	13/16"	5 1/2"	6 1/2"

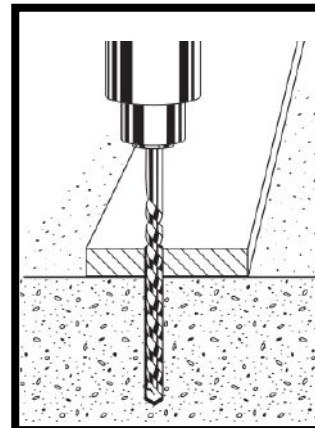
Anchor Bolt (Large Diameter Tapcon) Installation:



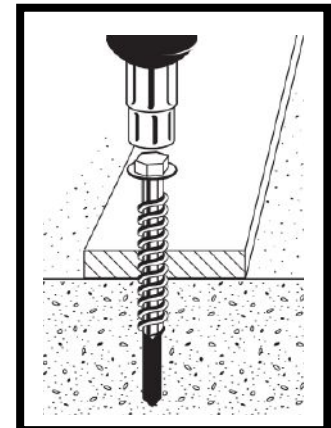
Mounting Detail  
(Not to Scale)



Step 1: Drill

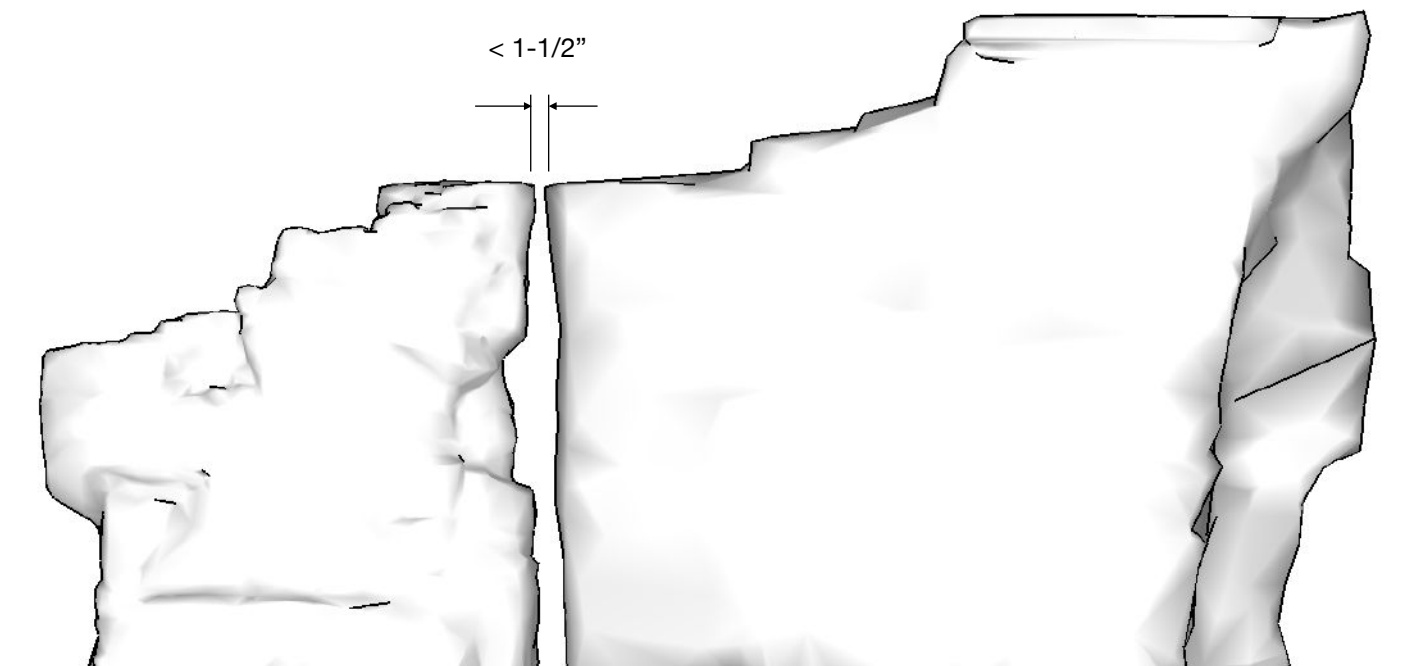


Step 2: Anchor



**NOTE:** Always wear eye protection appropriate to the task at hand.

**Configured rock climber to rock climber:** When the rocks are configured together, the adjacent top surfaces should be level with each other, +/- 1". The space between the two rocks should not be greater than 1-1/2".



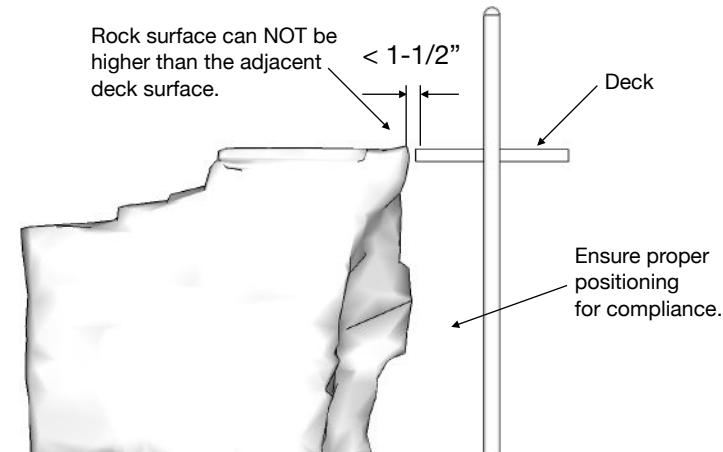
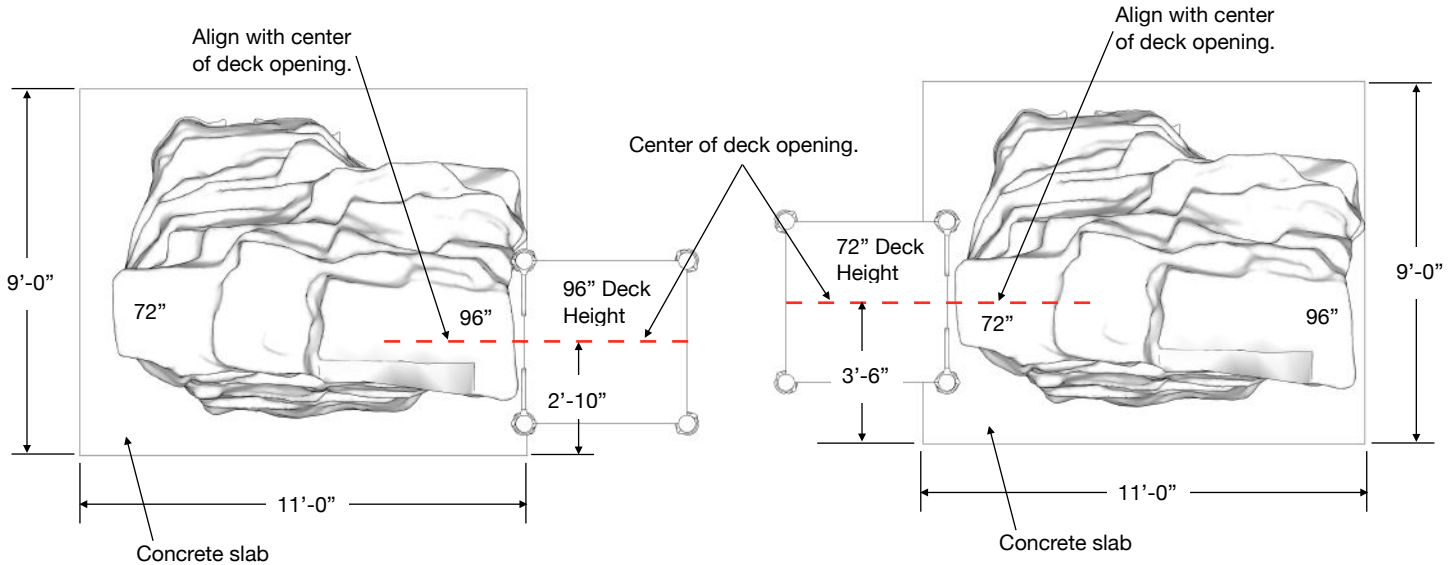
Ledge Rock

Strato Rock

Rock climber to rock climber



**Configured rock climber to deck:** When using a rock climber as a deck attachment, the rock climber surface adjacent to the deck surface should be flush with the deck surface or less (up to 1"). The adjacent rock surface should NOT be higher than the deck surface. The center of the rock climbing surface is offset from center of the concrete slab. See below images to place the concrete slab in the correct position to the center of the deck opening.



Strato Rock Climber to deck

~ All dimensions are approximate ~

**User Group Age: 5-12**

Revised 2/4/2025



# Strato Rock Climber

Products: 1000001, 1000010,  
1000011, 1000012

## Installation Instructions

### 1000001

#### Included Items:

Part #	Item	Description	Quantity
1000001	Strato Rock Climber	Play Equipment	1
HK131	HDW-19	Anchor Bolt 5/8" x 6"	4

### 1000010

#### Included Items:

Part #	Item	Description	Quantity
1000010	Strato Rock Climber w/ Rope Tabs	Play Equipment	1
HK131	HDW-19	Anchor Bolt 5/8" x 6"	4



# Strato Rock Climber

Products: 1000001, 1000010,  
1000011, 1000012

## Installation Instructions

### 1000011

#### Included Items:

Part #	Item	Description	Quantity
1000011	Strato Rock Climber W/ Slide Attachment	Play Equipment	1
HK023	HDW-8	3/8" X 1 1/4" BUTTON HEAD, PIN-IN, SS BOLT	4
HK023	HDW-25	3/8" FLAT WASHER, SS	4
HK023	HDW-15	3/8" SPLIT LOCK WASHER, SS	4
HK132	HDW-44	3/8" X 1" BUTTON HEAD, PIN-IN, SS BOLT	2
HK132	HDW-25	3/8" FLAT WASHER, SS	2
HK132	HDW-15	3/8" SPLIT LOCK WASHER, SS	2
HK132	VP1015	SLIDE BRACKETS	2
HK092	HDW-44	3/8" X 1" BUTTON HEAD, PIN-IN, SS BOLT	2
HK092	HDW-25	3/8" FLAT WASHER, SS	2
HK092	HDW-15	3/8" SPLIT LOCK WASHER, SS	2
HK092	HDW-31	3/8" BARREL NUT, SS	2
HK025	HDW-10	3/8" X 1 3/4" BUTTON HEAD, PIN-IN, SS BOLT	2
HK025	HDW-25	3/8" FLAT WASHER, SS	2
HK025	HDW-15	3/8" SPLIT LOCK WASHER, SS	2
HK097	HDW-11	3/8" X 2 1/4" BUTTON HEAD, PIN-IN, SS BOLT	2
HK097	HDW-25	3/8" FLAT WASHER, SS	2
HK097	HDW-15	3/8" SPLIT LOCK WASHER, SS	2
HK097	HDW-31	3/8" BARREL NUT, SS	2
HK070	HDW-14	3/8" X 5" BUTTON HEAD, PIN-IN, SS BOLT	4
HK070	HDW-25	3/8" FLAT WASHER, SS	8
HK070	HDW-15	3/8" SPLIT LOCK WASHER, SS	4
HK070	HDW-38	3/8" NYLOCK NUT, SS	4
HK131	HDW-19	Anchor Bolt 5/8" x 6"	4

~ All dimensions are approximate ~

**User Group Age: 5-12**

Revised 2/4/2025



# Strato Rock Climber

Products: 1000001, 1000010,  
1000011, 1000012

## Installation Instructions

### 1000012

#### Included Items:

Part #	Item	Description	Quantity
1000012	Strato Rock Climber w/ Rope Tabs & Slide Attachment	Play Equipment	1
HK023	HDW-8	3/8" X 1 1/4" BUTTON HEAD, PIN-IN, SS BOLT	4
HK023	HDW-25	3/8" FLAT WASHER, SS	4
HK023	HDW-15	3/8" SPLIT LOCK WASHER, SS	4
HK132	HDW-44	3/8" X 1" BUTTON HEAD, PIN-IN, SS BOLT	2
HK132	HDW-25	3/8" FLAT WASHER, SS	2
HK132	HDW-15	3/8" SPLIT LOCK WASHER, SS	2
HK132	VP1015	SLIDE BRACKETS	2
HK092	HDW-44	3/8" X 1" BUTTON HEAD, PIN-IN, SS BOLT	2
HK092	HDW-25	3/8" FLAT WASHER, SS	2
HK092	HDW-15	3/8" SPLIT LOCK WASHER, SS	2
HK092	HDW-31	3/8" BARREL NUT, SS	2
HK025	HDW-10	3/8" X 1 3/4" BUTTON HEAD, PIN-IN, SS BOLT	2
HK025	HDW-25	3/8" FLAT WASHER, SS	2
HK025	HDW-15	3/8" SPLIT LOCK WASHER, SS	2
HK097	HDW-11	3/8" X 2 1/4" BUTTON HEAD, PIN-IN, SS BOLT	2
HK097	HDW-25	3/8" FLAT WASHER, SS	2
HK097	HDW-15	3/8" SPLIT LOCK WASHER, SS	2
HK097	HDW-31	3/8" BARREL NUT, SS	2
HK070	HDW-14	3/8" X 5" BUTTON HEAD, PIN-IN, SS BOLT	4
HK070	HDW-25	3/8" FLAT WASHER, SS	8
HK070	HDW-15	3/8" SPLIT LOCK WASHER, SS	4
HK070	HDW-38	3/8" NYLOCK NUT, SS	4
HK131	HDW-19	Anchor Bolt 5/8" x 6"	4

~ All dimensions are approximate ~

**User Group Age: 5-12**

Revised 2/4/2025