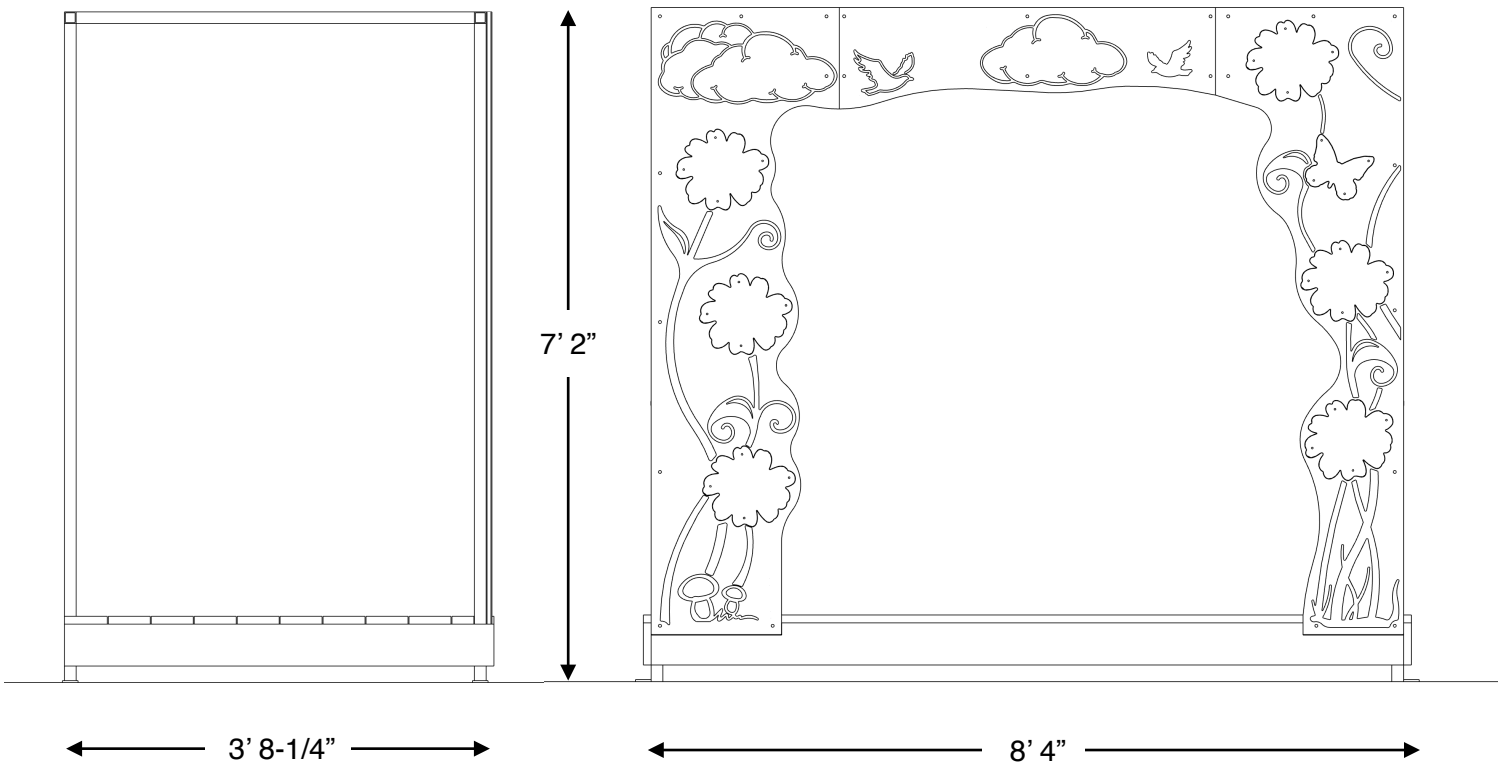
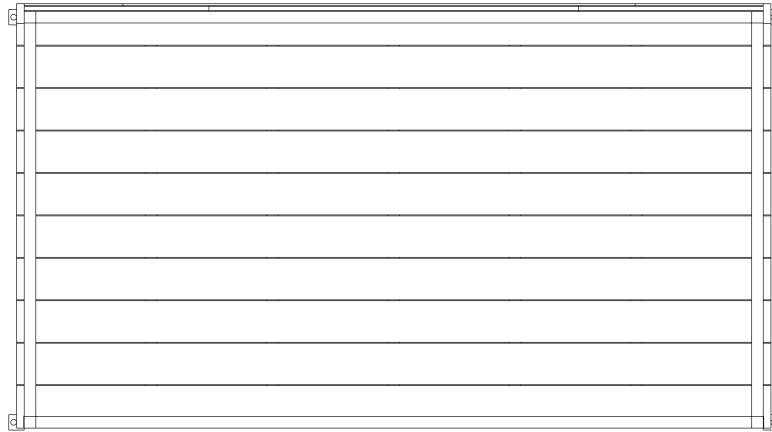


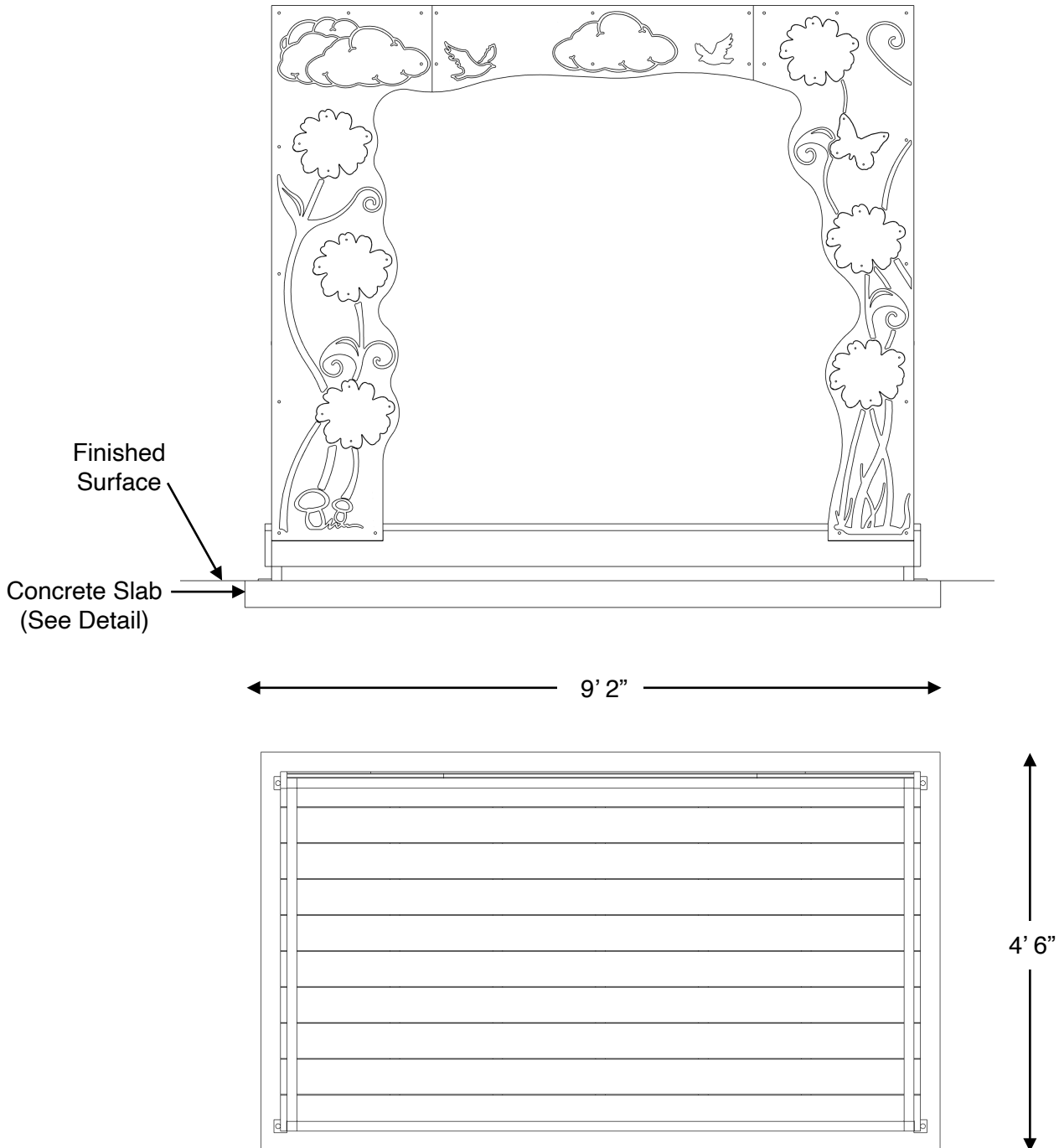


A fun themed stage with nature inspired look. Constructed of durable HDPE plastic, powder coated steel frame and composite decking. Perfect for the the outdoor classroom.



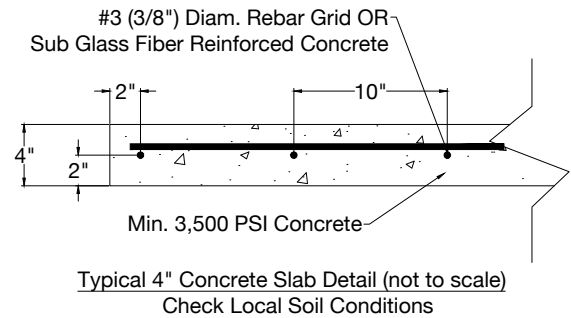
L: 8' 4"
W: 3' 8-1/4"
H: 7' 2"
600 LBS





NOTES PRIOR TO CONSTRUCTION:

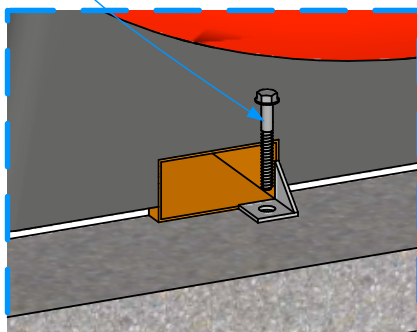
- Use appropriate equipment to lift and move the play equipment.
- Check local codes and requirements prior to digging or installing any equipment.



EXAMPLE OF COMPONENT



ANCHOR BOLT
SEE CHART



NOTE: Read installation instructions thoroughly before starting installation process.

Step 1: Lay out the area and prepare the site for install. Concrete must be installed over a solid, level base. Check local soil condition and codes. See product installation instructions for minimum use zone requirements to ensure proper spacing and adequate surfacing area.

Step 2: Pour a concrete base for the component. Refer to the typical concrete slab section in this document. The concrete should be flush with the ground level. Allow time for the concrete to completely cure before continuing.

Step 3: Using an appropriate forklift or boom, place component into final installation location. See the hardware recommendation for information on anchoring equipment down to your concrete slab.

Step 4: Locate your anchor bolts, supplied. Using the proper standard drill bit size noted in the installation table, drill the concrete to the appropriate hole depth through the mounting holes.

Step 5: Insert the anchor bolt into the hole and tighten until the bolt is fully seated. Do NOT over tighten the anchor bolts.

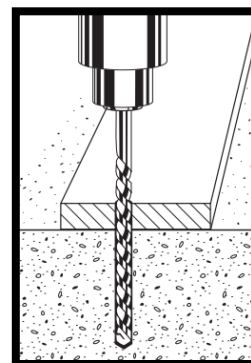
Included Items:

Item	Description	Quantity
Garden Stage	Equipment	1
Anchor Bolt 1/2" x 3"	Mounting Hardware	4

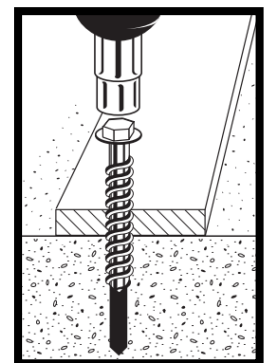
Anchor Bolt Installation:

Anchor Bolt Size	ANSI Standard Drill Bit Diameter	Anchor Head (Socket Size)	Minimum Embedment	Hole Depth
1/2" x 3"	7/16"	3/4"	2 1/2"	3 1/2"
5/8" x 4"	1/2"	13/16"	3 1/2"	4 1/2"
5/8" x 6"	1/2"	13/16"	5 1/2"	6 1/2"

Step 1: Drill



Step 2: Anchor



NOTE: Always wear eye protection appropriate to the task at hand.